



PARKS AND RECREATION ADVISORY BOARD
MEETING October 12, 2022
6:00 PM
Location: Leeper Center Community Room
Meeting Agenda

- A. CALL TO ORDER
 - a. Roll Call
- B. PUBLIC COMMENT ON NON-AGENDA ITEMS (time limit 3 minutes per person).
- C. CONSIDERATION OF MINUTES
 - a. September 21st, 2022
- D. BOARD REVIEW AND DISCUSSION/ACTION ITEMS
 - a. Vacant Position
 - b. Design Standards
 - c. Wish List Items
- E. ANNOUNCEMENTS
 - a. Advisory Board Members
 - b. Town Board of Trustee
 - c. Town Staff

ADJOURNMENT



PARKS AND RECREATION ADVISORY BOARD MEETING

October 12, 2022

6:00 PM

Location: Leeper Center Community Room

Meeting Agenda

A. CALL TO ORDER

a. Roll Call

- i. Lorilyn Present
- ii. John Present
- iii. Robert Present
- iv. Billy Present
- v. Jordan Present
- vi. Kallie Absent
- vii. Gleidys Absent
- viii. Trustee Dailey Present

B. PUBLIC COMMENT ON NON-AGENDA ITEMS (time limit 3 minutes per person).

- a. Public comment about doing some volunteer work on the bike park at Wellington Community Park. Public was told town staff would follow up.

C. CONSIDERATION OF MINUTES

- a. May 11, 2022
- b. June 8, 2022
- c. July 21, 2022
- d. August 10, 2022
 - i. John made a motion to approve minutes for May 11th, June 8th, July 21st, and August 10th, 2022, minutes. Billy seconded and all board members approved the minutes.

D. BOARD REVIEW AND DISCUSSION/ACTION ITEMS

- a. Trails
 - i. Bob Gowing and Alex Evonitz

- Item postponed until later meeting
- b. Potential Vacancy – Discussion of Kallie Coopers Position
 - i. All members wanted to wait for Kallie’s response before deciding about if the position needed to be vacant or not.
- c. Electing Officers
 - i. Co-Chair
 - John Volunteered to be Co-Chair. All present members were in favor, there were no opposed.
 - ii. Secretary
 - Robert volunteered to be Secretary. All present members were in favor, there were no opposed.
- d. Parks and Recreation CIP Budget
 - i. The Interim Parks and Recreation Manager presented the Draft CIP Budget to the board members. He presented what each request was for and described what each of them was for. The Parks and Recreation Advisory Board discussed wanting to ensure the Parks Master Plan was something that was kept in our minds and talked about for coming years or if we find money elsewhere.
 - ii. Discussions for grants such as GOCO were also talked about. The board wants to see what other grants might be available as well.
- e. Design Standards
 - i. The Interim Parks and Recreation Manager brought up the design standards and mentioned that it may be time to revisit them with new equipment, and update things to current standards, suppliers, and ensure it can guide the department and town. The Parks and Recreation Advisory Board wanted to visit this as well and wants to look at and find some options.

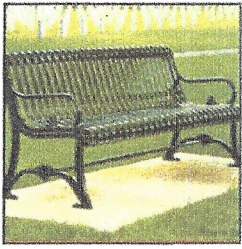
E. ANNOUNCEMENTS

- a. Advisory Board Members
 - i. Lorilyn asked about where signage was at. The Interim Parks and Recreation Manager told her that the company was contacted, and we are waiting for more information about a timeline.
- b. Town Board of Trustee
 - i. No updates.
- c. Town Staff
 - i. Dog park stations would be going in at Centennial Park
 - ii. Ribbon Cutting for Centennial would be on October 4th.

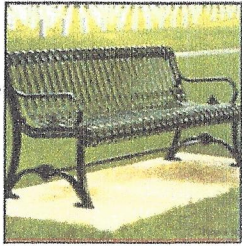
iii. The bike rack at the Library will be changed to our design standards.

ADJOURNMENT

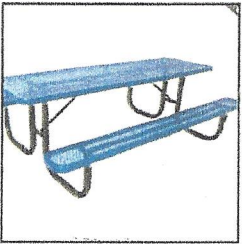
- Meeting Adjourned at 7:45pm.



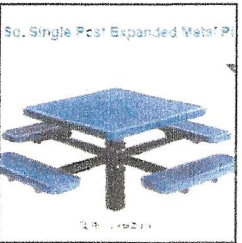
Trail Benches / Sidewalk
BLACK
Du Mor #19 Or 58
6 or 8ft
\$1010-1295



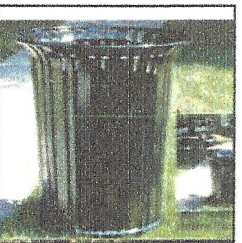
Park Benches—Change Color
Du Mor #19 Or 58
6 or 8ft
\$1010-1295



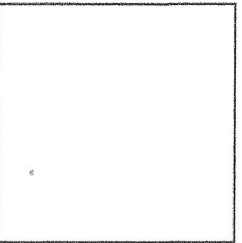
Picnic Table—Everest Series
(Rectangle)
\$600-1400



Picnic Bench
Round or Square
Steel or Metal
Non coated preferred
\$647-1568
theparks\$facil.com
\$1095



Trash Can
Du Mor #84 or 87
All Steel \$640-\$885
3 sizes



Poo Stations
Constructed at the town
for about \$150

Design Guidelines for Furnishings

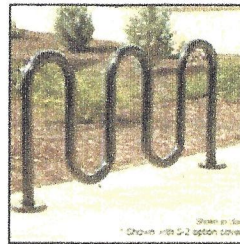
Preferred manufacturer named, others ok but must be same style and quality.

Cost doe not include installation—hardware and concrete pad need to be taken into consideration.

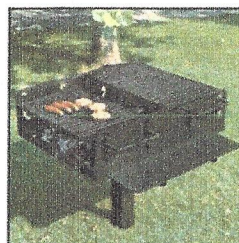
Most styles are surface or drillable

Downtown and along trails colors should be consistently powder coat black

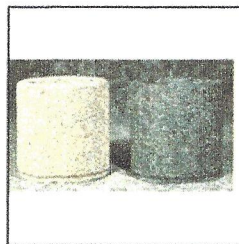
Parks colors to be used in coordination with park theme



Bike Rack - Style : Winder
Du Mor #125 & 130
\$225—\$1340
Downtown/Trails—Black
Parks - Theme color



BBQ Station
Du Mor #21 & 22/thePark 166 series
\$ 299-700
DO NOT ORDER SURFACE MOUNT



Planters \$177 white or black
Theparks.com 261-1049

PAB Wish List

These are in no particular order and are an ongoing list of needed/wanted items

General

- GRASP update
- Parks and Trails Master Plan update
- Signage at all parks
- Trail through town completed and in talks with Larimer County and Fort Collins to connect
- Exercise stations for all ages along trail system
- Existing disc golf needs new T pads and basket locks
- Basketball court on east side of I-25
- New skate park on west side
- Additional wheelchair accessible picnic tables throughout
- Figure out better drainage in underpass
- More soccer fields throughout
- Disc golf course in WCP North (\$10,000.00)
- Recreation Center
- Pour in place surfacing at all parks
- ADA playground equipment throughout
- Basketball court North of Cleveland on West side

Winick Park

- More trees for east side of park
- Pour in place surfacing

Park Meadows Park

- Dog Park
- Pour in place surfacing

Wellville Ponds Area

- Wheelchair accessible dock by pond
- Signs for handicap parking spaces
- Relocate bike rack closer to picnic tables
- Extend concrete pads for benches for wheelchairs and strollers

View Pointe Park

- Update equipment
- Get rid of mulch and replace with pour in place surfacing
- Add real bathrooms
- Lights for basketball court

PAB Wish List

Centennial Park (been through 2 designs so far)

- Work on processes and design to update the park including new playground equipment (small), amphitheater for outdoor concerts, bathrooms, area for farmers markets, area for large evergreen for tree lighting events and plenty of picnic tables.

Wellington Community Park

- More picnic tables and shade by softball fields

Library Park

- Need bike rack out in front of Leeper Center
- Shade structure 20' x20'